

# HSF 250 Patriot™

## Heavy Duty Line Stop Fitting - 4 -12 inch Nominal Sizes

### Material Specifications:

**Blind Flange:** Epoxy Coated Carbon Steel. Optional Domestic 304 Stainless Steel available.

**Body:** 304 Stainless Steel.

**Body Mounting Bolts:** 304 Stainless Steel. 5/8-11 UNC6. Optional Domestic 304 Stainless Steel 5/8-11 UNC6 available.

**Completion Plug:** HSF 250 Push and Pin Style. Reinforced Composite Polymer.

**Completion Plug O-ring:** BUNA-N Rubber.

**Completion Plug Pins:** SAE Grade 8. Zinc coated to prevent corrosion.

**Completion Pin Plugs:** 304 Stainless Steel. Coated to prevent galling.

**Flange:** 304 Stainless Steel.

**Flange and Body Mounting nuts:** 304 Stainless Steel. Nuts coated to prevent galling. Optional Domestic 304 Stainless Steel available.

**Flange Bolts:** 304 Stainless Steel. 5/8" UNC rolled thread. Optional Domestic 304 Stainless Steel available.

**Flange O-Ring:** BUNA-N Rubber.

**Mounting Lugs:** 304 Stainless Steel.

**Mounting Body – Bottom:** 14 gauge 304 Stainless Steel.

**Mounting Body – Top:** 11 gauge 304 Stainless Steel.

**Outlet:** 304 Stainless Steel

**Sleeve Armor Shields:** 16 gauge 304 Stainless Steel.

**Test Plug:** ¾" NPT type 304 Stainless Steel. Coated to prevent galling.

**Upper Sleeve Sealing Gasket:** NBR Rubber.

**Washers:** 5/8" 304 Stainless Steel. Optional Domestic 304 Stainless Steel available.

### Design Specifications:

**Factory Pressure Test:** Each HSF 250 is pressure tested and serialized for traceability before leaving our manufacturing facility.

**Integrated lifting gussets:** Incorporated to eliminate handling and safety concerns.

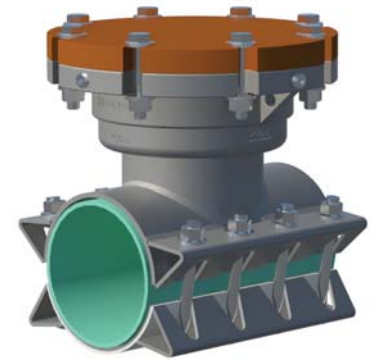
**HSF 250 Test and Working Pressures:** 250 psi working pressure. 375 psi test pressure max.

**Welds:** Welds fully passivated for improved corrosion resistance.

**Flange:** Hydra-Stop OEM to eliminate adaptor flange and provide trouble free line stopping.

The HSF 250 is NSF/ANSI Standard 61 and NSF/ANSI Standard 372 to meet the regulatory requirements for the U.S. and Canada assuring safe use in drinking water systems.

The HSF 250 Line stop fitting is manufactured in the USA. Meets American Iron and Steel Requirement (Public Law 113-76) and fulfills requirements specified in additional "Buy American" legislation. Meets "Made in USA" and "Buy America" requirements with the additional purchase of stainless steel domestic hardware.



**Patents Pending**



144 Tower Drive Burr Ridge, IL 60527 708-389-5111 <http://www.hydra-stop.com>

Specifications subject to change without notice. v1.5 HSF250\_Spec\_06/2017