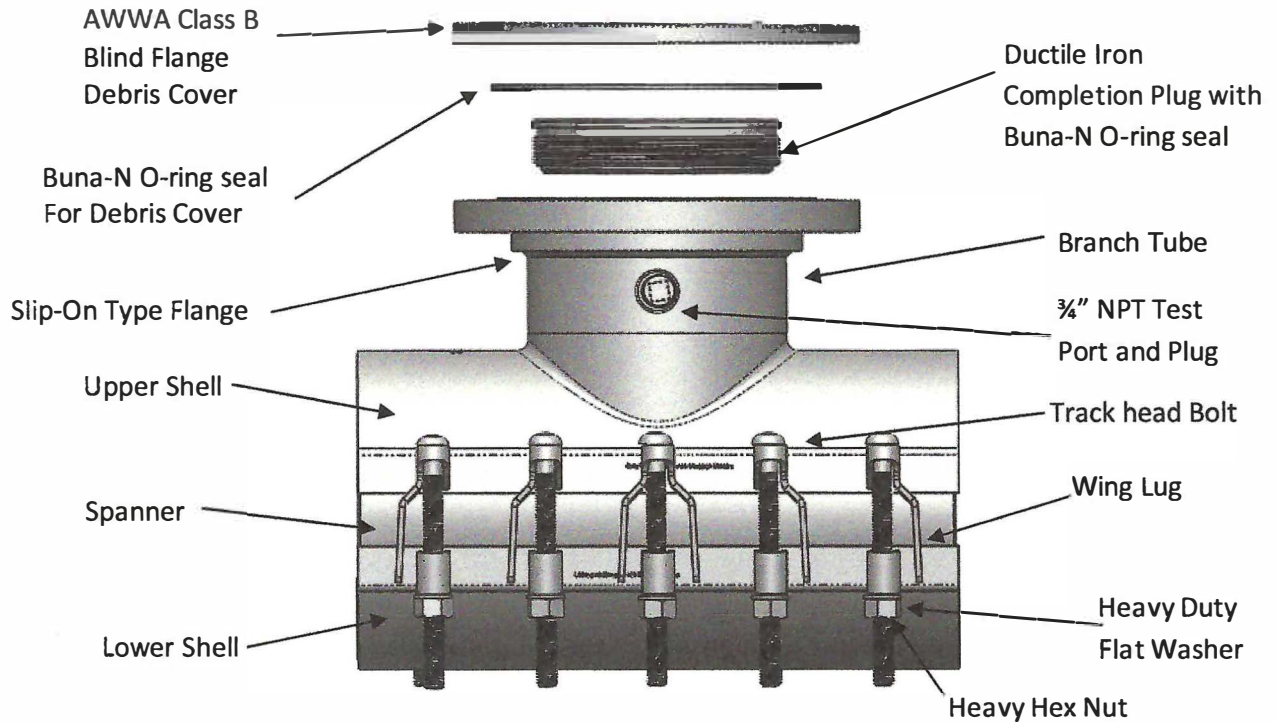


Triple Tap® Extended Range Stainless Steel Line Stop Tapping Sleeve Specifications



Flange:	Epoxy Coated Carbon Steel or 18-8 Type 304 Stainless Steel, Slip On, Bolt holes drilled to ANSI B16.5.
Completion Plug	ASTM A536 Grade 65-45-12 Ductile Iron, lubricated
Branch Tube:	18-8 Stainless Steel
Upper Shell:	10, 11 or 12 Gage 18-8 Type 304 Stainless Steel depending on diameter
Lower Shell:	10, 11 or 12 Gage 18-8 Type 304 Stainless Steel depending on diameter
Upper Gasket	Patent pending one piece matte gasket with integrated aperture seal and circumferential seal beads for a 360 degree seal.
Lower Gasket	Matte gasket with matching circumferential seal beads for a 360 degree seal.
Alignment Lugs:	18-8 Type 304 Stainless Steel
Gaskets:	Material: Nitrile Butadiene Rubber (NBR) Approved NSF-61
Spanners:	18-8 Type 304 Stainless Steel bridging spanner integrally molded into gasket,
Test Port:	18-8 Type 304 Stainless Steel 3/4 Inch NPT Female Vent Port with 18-8 Stainless Steel Pipe Plug

TOTAL PIPING SOLUTIONS, Inc.

