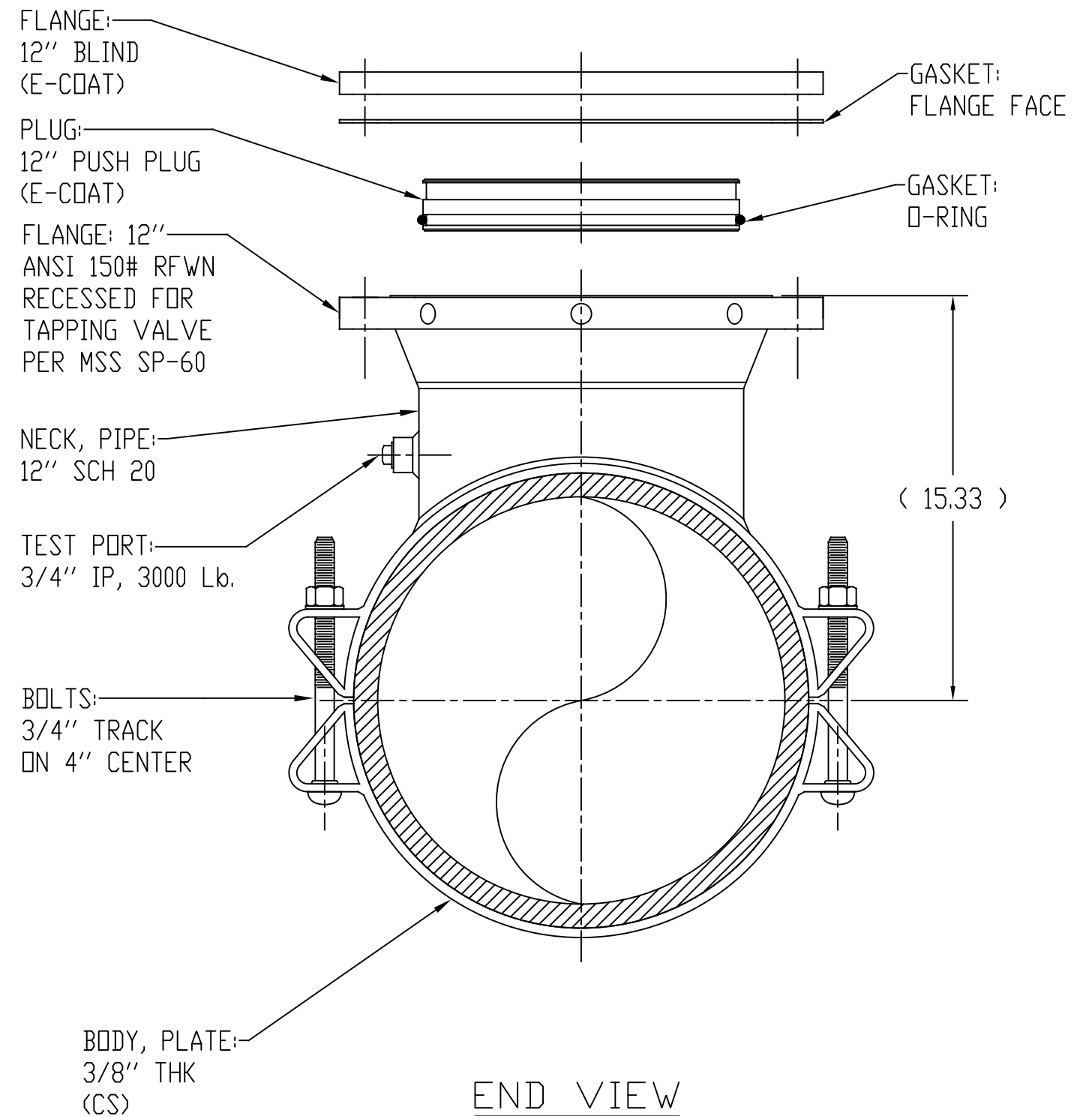


SECTION



END VIEW

NOTES:

1. DESIGN AND FAB PER AWWA C-223
2. WORKING PRESSURE: 150 PSI
3. FINISH: FUSION EPOXY COAT
4. FASTENERS: 304 SS
5. FAB TO LINE STOP ACCURACY

THIS DRAWING INCLUDING ALL NOVEL AND PATENTED OR PATENTABLE SUBJECT MATTER EMBODIES CONFIDENTIAL INFORMATION OF JCM INDUSTRIES, INC. AND IS LOANED WITH THE UNDERSTANDING THAT IT WILL NOT BE REPRODUCED NOR BE USED FOR ANY PURPOSE EXCEPT FOR WHICH LOANED UNLESS WRITTEN PERMISSION IS GRANTED BY THE OWNER AND THAT IT SHALL BE RETURNED UPON DEMAND.

REVISIONS	DATE	S	BY	APVD.

  
 48595 West Road Wixom, MI 48393

UNLESS OTHERWISE SPECIFIED TOLERANCES TO BE			DRAWN BY	CHECKED BY	APVD. BY	DWG. NO.	REV.
FRACTIONS	DECIMALS	ANGLES	BDR	-----	-----	GEN-017672	---
± 1/4"	.125	5°	DATE	NO. SHEETS	SCALE	PART NO.	---
			06/07/19	1 of 1	-----	-----	---

440-14", 16", 18", 20" x 12" T 12 ESS  
CARBON STEEL LINE STOP FITTING